



## 18 TONNE OF **NITRILE GLOVES** AIR FREIGHTED FROM KUALA LUMPUR TO FRANCE

The surge in the need of medical services due to the Covid-19 pandemic has created an increasingly high demands of gloves. Malaysia being one of the largest gloves exporters in the world is definitely experiencing the boost in gloves export.

Thanks to local clients and overseas partners, we have also handled several large shipments of exporting nitrile gloves, primarily via air freight. The most recent case is a shipment comprising 4000 cartons of gloves being flown from Kuala Lumpur to France. We think the trend will continue, at least for the foreseeable future.

### EXPANSION OF GLOVE MANUFACTURING PLANT

### PROJECT BY OUR ASSOCIATE MEGALIFT



Gloves manufacturers in Malaysia are already maximizing their production lines to keep up with the demand. A number of them are also expanding their existing plants to cater to the growing order books. We're also involved in the expansion of some of the manufacturing facilities. Our associate company Megalift has secured a job to transport five units of tanks every week for 10 weeks to a renowned glove company in Malaysia. The new factory is targeted to complete next year.





## IMPORT OF RAW MATERIALS FOR THE MANUFACTURING OF PPE

We have a new client that is importing a lot of raw materials from India to supply to manufacturers of personal protection equipment. This is largely due to the surge in medical demand for PPEs. The first shipment that we handled was 20 containers and there will be more to come.

We're the appointed freight forwarder to undertake the customs clearance, unstuffing of containers in our warehouse and distribution to the manufacturers all over Malaysia. Most of the finished products will be used in local hospitals while partially will be exported out to USA and Europe.



## HANDLING OF RADIOACTIVE MATERIALS FOR A CEMENT PLANT

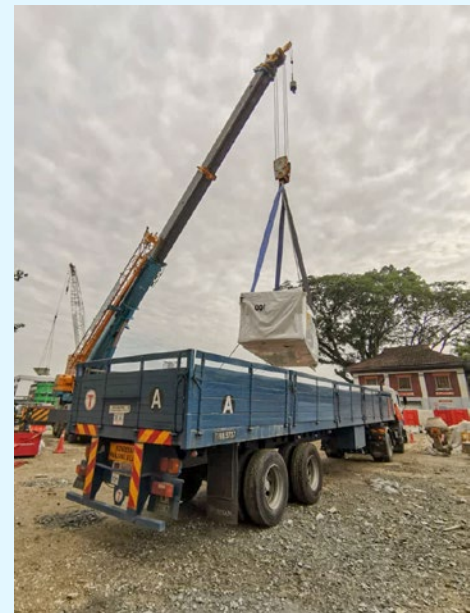
We assisted our client to apply with the Civil Aviation Authority of Malaysia to import this Dangerous Cargo from New York. It's a barrel containing radioactive materials that require special handling. Upon approval, we arranged for the freight from New York to Kuala Lumpur and finally delivered them to the cement plant site in Pahang.





## URGENT IMPORT OF GAS TURBINE FROM JAPAN

We were asked to urgently import a gas turbine to be sent to a power station in Port Dickson. Thankfully our team managed to arrange it for our client, the national electricity company without delay. Due to the sizes of the cargoes, we delivered them to the site using a low-bed trailer.



## 250 CONTAINERS OF ESCALATOR PARTS FOR UNDERGROUND KLANG VALLEY RAILWAY PROJECT

We were handling the Phase 1 of this Klang Valley railway project back in year 2016. The scope of works were similar - import of escalator parts, customs clearance, handling in our warehouse, storage, delivering them to the site and finally unloading and installation of the escalators.

Our involvement in the Phase 2 of the project started last year with the elevated stations. In total, there are nine elevated and nine underground stations. We have completed some of the elevated stations and are still doing regular deliveries of the escalator parts to the remaining stations.

Recently we began working on the underground portion and have completed the first station. Our familiarity with the import and handling of escalator and elevator parts is the reason we continue to deliver possibilities for our customers. Glad to be working hand-in-hand with our associate Megalift and we hope to service our clients for the Phase 3 of the railway line or other projects, if any.





## TRANSPORT OF 400 GIRDERS FOR LIGHT RAPID TRANSIT PROJECT



Cargo: Girder  
Dimension: L27 - 30 m  
Weight: About 160 ton each



## NEW CO-GENERATION PLANT

## PROJECTS BY OUR ASSOCIATE MEGALIFT



60 packages, approximately 1850 metric ton, from Houston, USA to Port Klang were imported for a new co-generation plant that we're working on for our client. Among the largest cargoes are the Evaporators.

Cargo: Evaporator (2 units)  
Dimension: L9.40 m x W5.00 m x H3.91 m  
Weight: About 70 ton each