



## STORAGE & DISTRIBUTION FOR SOLAR INDUSTRY

Apart from large scale solar projects, we are also very much in the business of providing storage and distribution services to our solar customers. Whether it's rooftop for residential, commercial or industrial projects, we are equipped with the facilities and fleet of trucks to satisfy orders and a tight delivery schedule.

Most of these projects are smaller in scale. However, import shipments for solar panels, structures and other electrical items are done in large batches. Our warehouse functions ideally well as a transit point to either consolidate or segregate these items before they are distributed to every project site.



## STORAGE & HANDLING OF BAUXITE, CEMENT & MINERALS

We're glad to have the trust and support of our long term client. They are in the steel and foundry industries, serving customers worldwide with their metal engineering solutions. Apart from rooms for storage, we also assist in inventory management to meet the needs of their supply chain.

# CONSTRUCTION MATERIALS FOR NEW POWER PLANT

We have been anticipating the kickstart of this new project. Working hand-in-hand with our associate company Megalift, we are happy to be handling the logistics for the set-up of a new power plant in Malaysia. A series of deliveries have been sent to the site carrying construction materials. This 1,200 MW gas-fired power plant is expected to be completed in two years. We will have more updates in the upcoming newsletters!



## EXPORT OF CRANE SETS FROM PORT KLANG TO ABU DHABI WITH MORE THAN 100 CONTAINERS IN TOTAL

With new orders to fulfill, we helped our customer to arrange the freighting for crane sets from Port Klang to Abu Dhabi, UAE. This is an ongoing project with more than 100 containers in total comprising flat racks and open tops spread over a few months. The first two shipments went really well and we hope to continue the good work for the rest of the shipments.



# AIR FREIGHT



## URGENT, TEMPERATURE-CONTROLLED MEDICAL GOODS IMPORTED FROM UNITED KINGDOM

Time and temperature sensitive cargoes require speedy action to transfer them out from the terminal and deliver to the customer. These therapeutic products were packed in insulated packaging and required to be chilled at between 15-25 degree Celcius. Knowing this prior to the arrival, our team was on standby along with a reefer truck to pick the goods right away to prevent any delay.

## COMPRESSOR MOTOR REPLACEMENT FOR OIL & GAS REFINERY



For a large oil and gas refinery, idling and downtime should be kept to a bare minimum. When something breaks down, a replacement order is done right away and the unit has to arrive in no longer than a handful of days. This compressor motor was flown in from South Korea from the Korean supplier who was the EPC that set up the refinery plant two years ago. We then transported it to Melaka for the installation to take place.



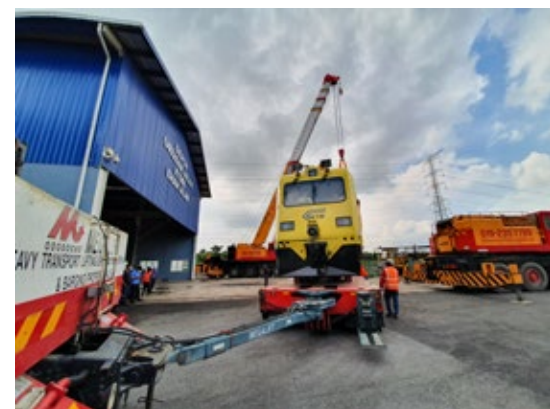
## PLASTIC INJECTION MOLD STAMPING DIE FROM JAPAN

We have been handling a lot of stamping dies for the automotive industry. Increased production is trying to meet the higher demands of motor vehicles in the market. These are stamping dies for plastic molds for the manufacturing of an ongoing car model.



Megalift has started handling the import for the construction of 1,200 MW Gas-fired, combined-cycle Pulau Indah Power Plant in Port Klang. The first shipments involved sets of Heat Recovery Steam Generators (HRSGs) shipped via both containerised and breakbulk vessels. Megalift is appointed as the official project logistics service provider in Malaysia and will take charge of all transportation until all the shipments are delivered. The project is expected to see its completion in year 2024.

## Machine 7804 Train Set for KTMB



Cargo: Machine 7084 Train Set  
 Dimension: L21.26 m x W2.91 m x H4.03 m  
 Weight: 59 ton



Megalift received the Machine Train Set in Port Klang that was shipped via RORO vessel from Germany. We then transported to Shah Alam and offloaded using two sets of mobile cranes.