

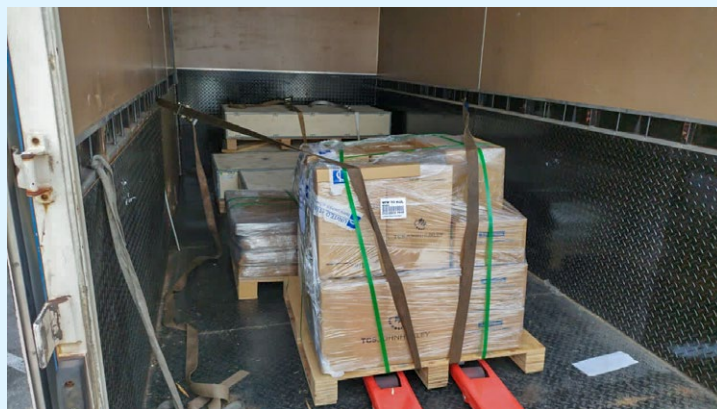


AIR FREIGHT



URGENT CARGO FROM BEIJING TO KUALA LUMPUR

This is a Control Panel set to be delivered to an oil and gas refinery plant in Kuantan, Pahang. The shipment was arranged from PVG to KUL and upon arrival, we noticed damage to the packaging. We promptly informed the customer and got their consent to arrange repacking right away. Thankfully, our team is experienced in handling delicate cargoes like this. Within hours the panel was loaded onto a low loader and scheduled to arrive at site the next morning.



IMPORT FROM ZURICH & MACAU TO KUALA LUMPUR FOR THE MAINTENANCE OF THEME PARK

We have been handling regular imports of spare parts, new machines and accessories for the maintenance of Malaysia's renowned theme park. These are orders fulfilled to support both planned maintenance services and unexpected downtime requirements.



EXPORT FROM KUALA LUMPUR TO PERTH FOR MINERAL PROCESSING PLANT



4 TON OF TRANSFORMER BUSHING FOR SUBSTATION SCHEDULED MAINTENANCE



WAREHOUSE HANDLING AND STORAGE FOR FAST MOVING CONSUMER GOODS

We have been handling more and more FMCG cargoes ever since the racking systems were set up in our new warehouse some months ago. In the near future, we will be expanding the racking facilities and have rooms to cater to more cargoes and customers.



IMPORT, WAREHOUSE HANDLING & DELIVERY TO MELAMINE PLANT

We've overseen the handling of over 100 containers for the establishment of a melamine plant in Kedah. Our warehouse serves as a staging point before onward delivery to the site, encompassing a variety of container types such as flat rack, open top, and standard containers. These shipments comprise an assortment of items, including steel valves, substantial frames, cables, pumps, and transformers.



FIRE DRILL & FIRE EXTINGUISHER TRAINING



Thanks to Mr. Ariff, our Safety Manager, for organizing the yearly fire drill and fire extinguisher training at our headquarters. This serves as a valuable opportunity to refresh our knowledge and maintain a constant emphasis on safety in all our activities. Safety remains our top priority!



Cargo: Locomotive (6 units)
Dimension: L22.00 m x W3.30 m x H4.74 m
Weight: 150 ton each



Cargo: Tamping Machine
Dimension: L17.00 m x W3.15 m x H3.41 m
Weight: 48 ton



Cargo: Rails (8,000 pieces)
Dimension: L25.00 m
Weight: 1.5 ton each (total 12,000 ton)



Cargo: Wagons (95 units)
Dimension: L14.10 m x W3.18 m x H1.43 m
Weight: 24 ton each

This month our team and equipment are occupied with the handling of shipments for East Coast Rail Link (ECRL) project. We have 6 units of locomotives entering via Kuantan Port and 95 units of wagons that arrived in Port Klang, both via conventional vessels. Our team and equipment have been mobilised to receive the cargoes and deliver them in batches to Kuantan for the installation to take place.

Simultaneously, we are also handling the import of Tamping Machines via Port Klang and 12,000 tons of rails via Kuantan Port. It's certainly a busy month for us but we are glad to be a part of this 665-km long railway project.