



AIR FREIGHT

6 TON OF INDUSTRIAL CABLE TRAYS FROM INCHEON TO KUALA LUMPUR

A significant quantity of cable trays is being utilized in a power plant. We recently managed the importation of nearly 6 tons of these items from South Korea to Malaysia for a newly built power plant.



CONSOLIDATING SPARE PARTS FROM SLOVENIA & MACAU TO KUALA LUMPUR

Several packages of different spare parts were recently flown in from Slovenia and Macau for the refurbishment of our client's existing arcade machines. We then consolidated the cargoes in our warehouse and delivered to the site.



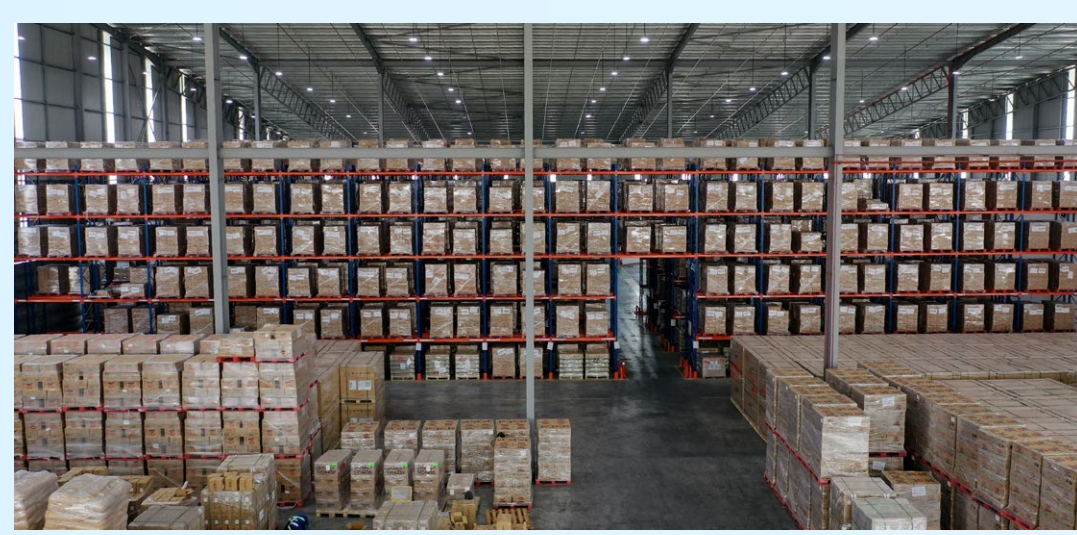
IMPORT OF LAPTOPS, BATTERIES, & ACCESSORIES FROM LONDON TO KUALA LUMPUR

The importation of computer-related products into Malaysia requires obtaining a permit and undergoing an inspection. Additionally, this particular shipment was designated as dangerous goods (DG) due to the inclusion of lithium-ion batteries. Fortunately, our team is highly knowledgeable on the inspection process and successfully navigated it, ensuring timely delivery to our client in Penang.



TACKLING THE DEMANDS OF FMCG HANDLING, STORAGE & DISTRIBUTION

Since the installation of racking systems in our new warehouse, we've experienced an increase in handling Fast-Moving Consumer Goods (FMCG) cargoes. We are still expanding our warehouse space and facilities to accommodate more cargoes and serve additional customers.



MORE IMPORT CONTAINERS FOR 192-KM RAILWAY PROJECT

The ongoing railway project is progressing with substantial shipments of flat rack containers loaded with excavators and other heavy machinery. Our warehouse and open yard serve as crucial transit points before we transport these items to the construction site, located over 200 km away.



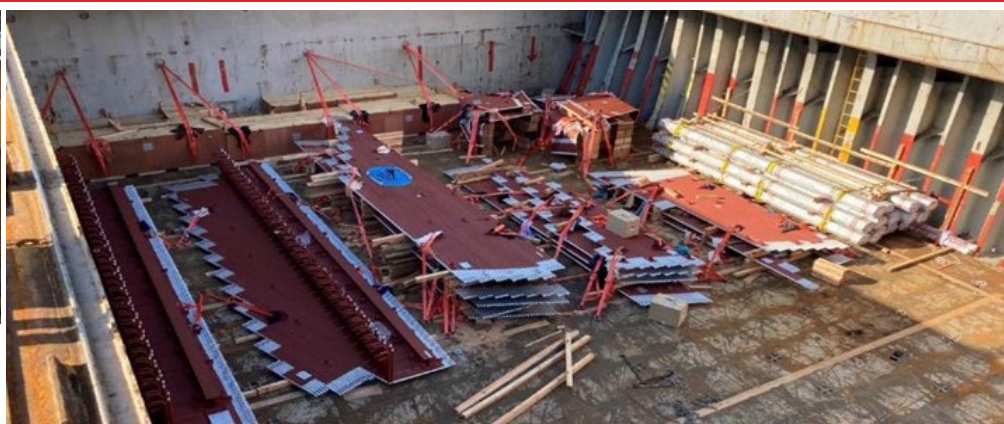
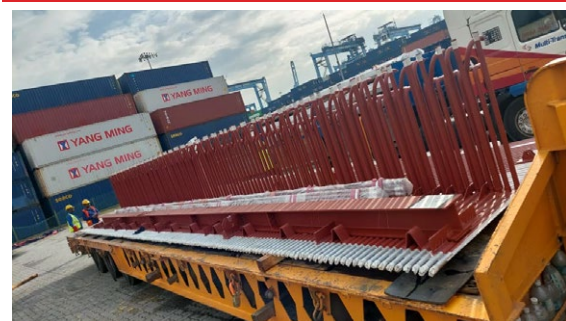
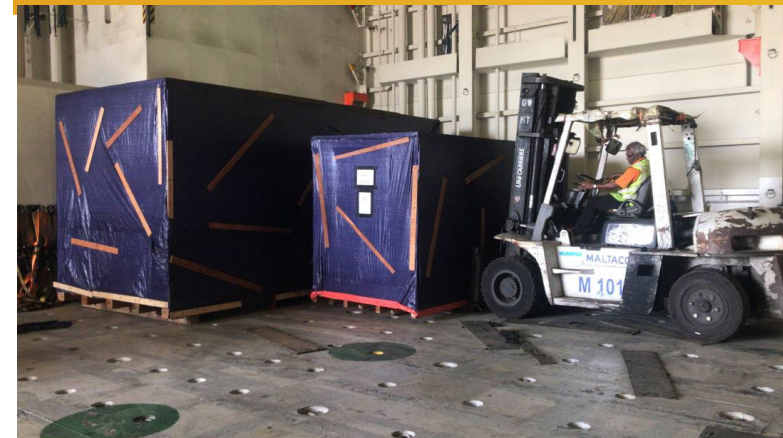
WAREHOUSE HANDLING & STORAGE FOR AUTOMOTIVE MACHINERIES

Our team is actively engaged in managing the logistics of machineries imported from multiple countries, as well as the domestic transportation of machinery within the Klang Valley. In addition to deploying our trucks for transportation, we also offer labor services for unloading, unpacking, and relocating these items into manufacturing plants situated in various locations.



Cargo: Injection Molding Machine
 Dimension: L7.28 m x W3.30 m x H3.50 m
 Weight: 43 ton

This was a shipment to return a used injection molding machine and its accessories to Japan from Port Klang. Due to the size and weight, we arranged the export using a combination of mafi and direct loading on RORO vessel. Thanks to our team's timely coordination for the smooth delivery.



Import of boiler accessories and reheater tubes for Jimah East Power Plant that we handled recently is part of the plant's maintenance exercise. The cargoes, in odd shapes and sizes, arrived via breakbulk and were temporarily stored in the port before we delivered to the site.