



AIR FREIGHT



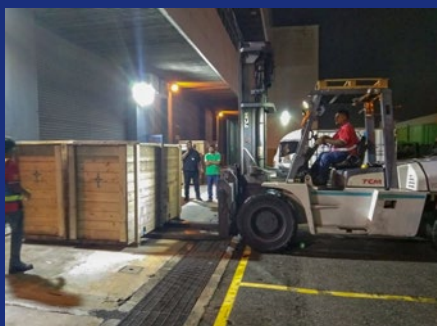
EXPORT FROM KUALA LUMPUR TO PERTH FOR MINERALS PROCESSING FACILITY

We've managed numerous air shipments from Kuala Lumpur to Perth, exporting industrial equipment like strainers, valves, and pipes for one of the world's largest minerals processing facilities. In addition to overseeing the freight logistics, we offered packing services since many of these items were initially collected without proper packaging



MORE THAN 3 TON OF IMPORT FROM BEIJING TO KUALA LUMPUR FOR SOLAR POWER PLANTS

We facilitated the import of power plant controller and monitoring systems from China, which were utilized in establishing two solar farms in Malaysia. Our involvement for this customer started with the sea import of containers and this air shipment signals the successful completion of the solar projects.



8 TON OF HEAT EXCHANGER FROM FINLAND TO KUALA LUMPUR

The shipment from Finland comprised a set of heat exchangers for a fertilizer production plant in Kedah. As the designated logistics service provider, we have been actively involved in managing various shipments since the project started.



WAREHOUSE HANDLING & STORAGE FOR 192-KM RAILWAY PROJECT

We've been consistently receiving containers containing rail skids, power generators, and excavators imported from Auckland, New Zealand. Our team has efficiently managed the unloading process at our warehouse, serving as a temporary transit point. Subsequently, these items were dispatched in batches to the construction site of the electrified double track railway project in the southern region of Peninsula Malaysia.



EXPORT TO EAST MALAYSIA FOR SOLAR PROJECT

We have overseen multiple shipments from Port Klang to Sabah for our client who is involved in the construction of solar projects in East Malaysia. Items included cables, switchboards and electric components.



IMPORT OF AUTOMOTIVE STAMPING DIES FROM JAPAN, TAIWAN, INDONESIA & THAILAND

Annually, we manage the import of stamping dies for Malaysia's vehicle manufacturer, facilitating the production of new car models. Shipments have started arriving at our warehouse, serving as a vital transit point. Stay tuned for further updates in the upcoming newsletter!



Our client, Asia's largest glass manufacturer, is in the process of constructing new plants in Malaysia dedicated to the production of automotive glass. We are currently overseeing the import of 300 packages, which include essential construction materials such as steel pipes and structures. here will be more shipments in the coming months for this RM1.5 billion project.

Upgrade of Airport Boarding Bridges

PROJECT



We successfully transported seven large packages from Port Klang to Kedah as part of the upgrade for the state's airport boarding bridges. This initiative, integral to the airport's maintenance efforts, involved the replacement of the existing airport bridges.

Cargo: Airport Boarding Bridge Series Tunnel
Dimension: L19.15 m x W3.68 m x H3.95 m
Weight: 25 ton

