



ESCALATOR TRUSSES FOR KLANG VALLEY MRT 2



We're happy to share the good progress of the escalators delivery to various underground stations for the current major Klang Valley railway project. It started sometime August last year and escalator trusses are imported and delivered to the site in batches. Most of them have been stored in our warehouse as a transit prior to delivery. We then arrange the transport according to the site schedule.

Multi-Trans works hand-in-hand with our associate, Megalift that performs the unloading at site. Working with our own manpower, equipment and technical expertise, we take charge of carrying the trusses to their final points of installation. At site, the escalator trusses are lifted and unloaded to the underground basement site more than 15 m below ground level.



AUTOMOTIVE CHECKING FIXTURES FOR MALAYSIA'S CAR MANUFACTURER

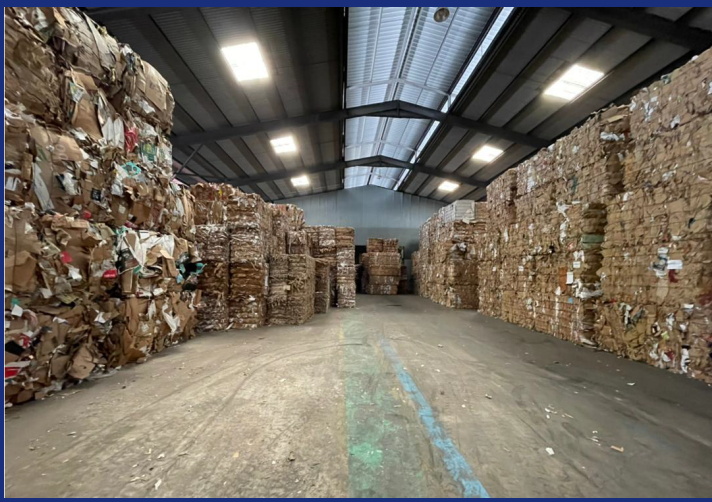
It's another shipment from Japan for the manufacturing of the 2021 model of its Multi-Purpose Vehicle, as we had shared in our previous newsletter.

This round, we handled several containers of checking fixtures - a set of tools to test the car. It's a crucial step to measure and evaluate the dimensional quality of the parts.



We received and transported sets of power supply accessories for a large power generating facility in Malaysia. From Port Klang, we crossed a distance of more than 400 km before we unloaded for the installation to take place.

POWER SUPPLY EQUIPMENT FOR POWER PLANT



STORAGE OF RECYCLING MATERIALS

As we are at the final stages of the set-up of our client's recycling plant, we have begun handling their import of raw materials. It is the client's preparation for the commissioning of their new production line as these materials are required in large volume. Our warehouse is temporarily used to store the materials until the plant is ready to run at its full capacity.

AIR FREIGHT



10 TON OF ANTENNA SYSTEM FROM UK FOR RESEARCH & DEVELOPMENT

A specialist on information communication technology (ICT) imported a set of antenna system from the UK for research and development programme. There were a total of 7 packages including some of its accessories that we handled and transported to site.

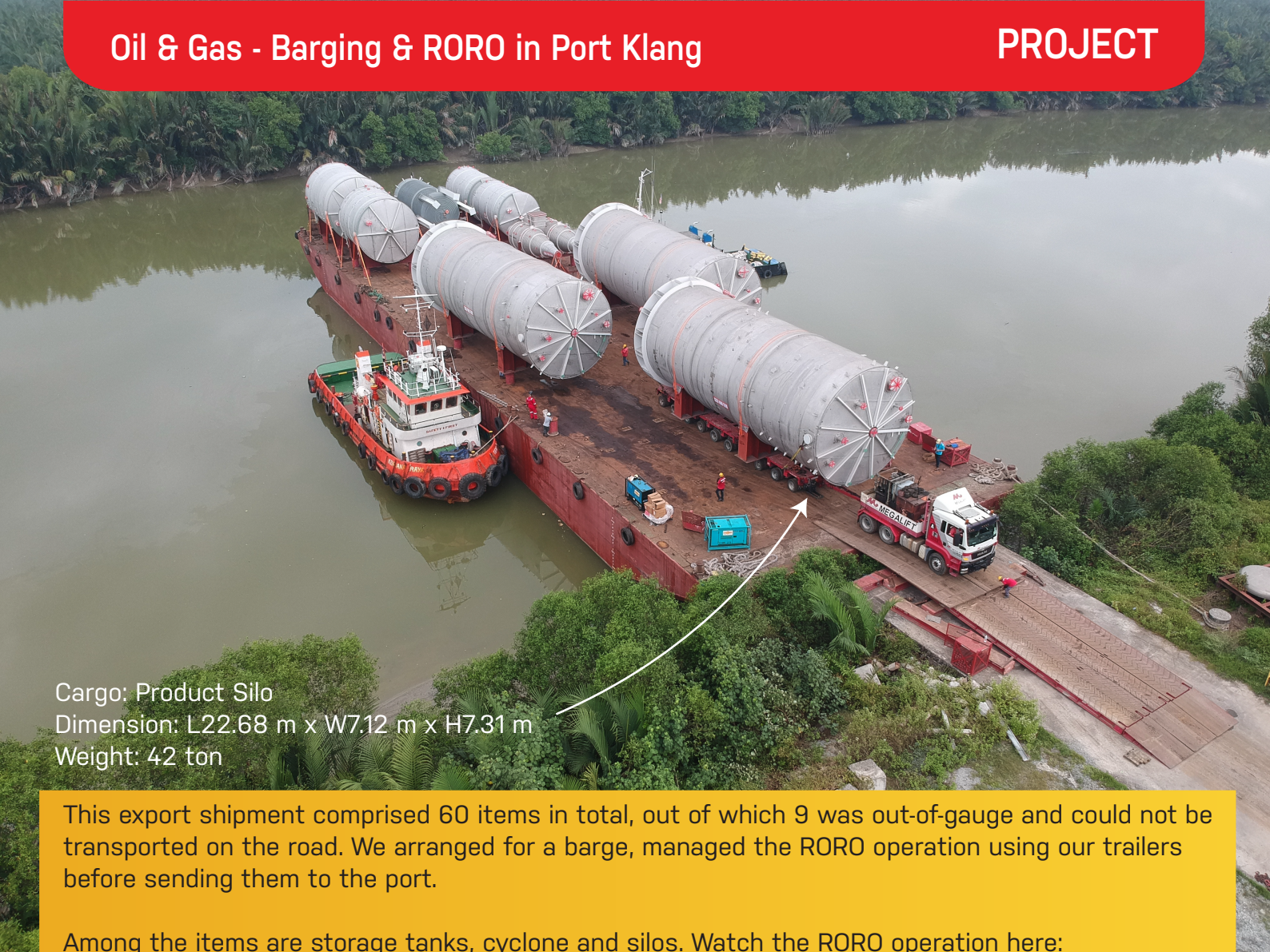


GENERATOR PARTS FROM SOUTH KOREA

Our client is an engineering company supplying to power plants a wide variety of spare parts. One of the recent shipments among the handful from South Korea was a Stator Motor for the use in generators.

The package weighed 9.8 ton and we delivered to the client's site in Johor.





Cargo: Product Silo
 Dimension: L22.68 m x W7.12 m x H7.31 m
 Weight: 42 ton

This export shipment comprised 60 items in total, out of which 9 was out-of-gauge and could not be transported on the road. We arranged for a barge, managed the RORO operation using our trailers before sending them to the port.

Among the items are storage tanks, cyclone and silos. Watch the RORO operation here:
<https://www.youtube.com/watch?v=QwMsyHzaN-M>

Transport of Tunnel Boring Machine (TBM)



Another round of TBM shifting within Klang Valley by Megalift and this time, we completed 5 sets. There were series of transportations carrying different parts of the TBM including the heaviest front shield, middle shield, tailskin and all of its accessories.

Cargo: Front Shield
 Dimension: L6.8 m x W6.8 m x H4.6 m
 Weight: 170 ton each

