



AIR FREIGHT



TRANSFORMER PARTS FLOWN FROM GERMANY FOR SUBSTATION MAINTENANCE WORKS

We have regular air freight shipments for this customer who does substation maintenance for the country's power generating facilities. This shipment comprising 45 pallets and weighing almost 7 ton are parts of transformers to be distributed out to substations scheduled for repair and replacement.

URGENT 5.2 TON IMPORT FROM INDIA FOR SOLAR POWER PLANT



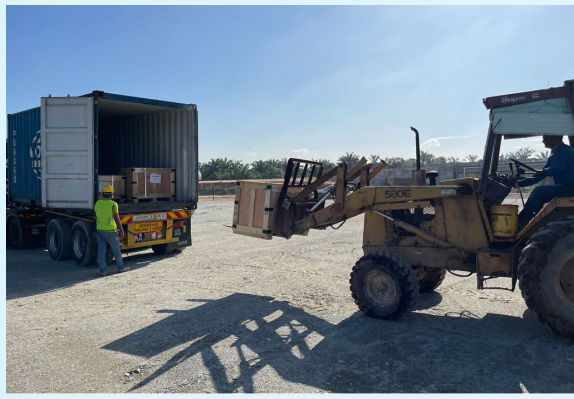
Our client decided to air freight the initially planned sea shipment as the cargoes are urgently in need. The items are a major component of solar power generation which will be required for the scheduled commissioning of the plant.



20 TON OF GAS TURBINE COMPONENTS FROM AMSTERDAM TO KUALA LUMPUR



CONVEYOR SPARE PARTS FROM CHICAGO TO KUALA LUMPUR



DELIVERIES FOR LSS4 SOLAR PROJECTS VIA PENANG AND PORT KLANG TO VARIOUS LOCATIONS

The construction for solar plants gazetted under the Large Scale Solar 4 continues with new projects including a floating solar farm in Klang Valley. Containers carrying structures, solar modules and floaters are being distributed to every project site on a daily basis. We will be seeing these solar projects generating power very soon!



HANDLING OF IMPORT SHIPMENTS FOR COOLING SYSTEMS

This is also a project that we secured in year 2023 to handle the import of cooling systems. There are containers being shipped in via Pasir Gudang port and conventional cargoes via Port Klang. Our client is a manufacturer of cooling systems and supplies to various entities in Malaysia that require controlled, ideal temperature to function optimally.



LOADING OF TRUCK FOR EXPORT FROM PORT KLANG TO CHINA

Our client had a special request to ship a prime mover from Port Klang to China for some modification works to be done. The loading was done in our warehouse by our team including the lashing and choking. We will also be handling the re-import once the additional work in China is done.



Cargo: Cold Box
Dimension: L40.11 m x W5.00 m x H3.65 m
Weight: 127 ton

This ASU project is part of the construction of a huge manufacturing plant in Bayan Lepas, Penang. We have been handling several deliveries for the same project since early this year.

This particular conventional shipment had 63 packages with the largest being the Cold Box where we received in Penang Port. The other items included ducts, platforms, coolers and joints. Deliveries to site are currently being carried out in batches.



Import of Steel Pipes and Steel Structures

PROJECT



Megalift is familiar with the intricacies of importing steel products as most of the items will require import permit. We assist customer with the testing, inspection and overall import permit procedures. This is a regular customer importing via Port Klang and we deliver all the goods to their site in Kuantan.