



AIR FREIGHT



IMPORT OF FIRE SECURITY DEVICE FROM AMSTERDAM TO KUALA LUMPUR

We managed the import of a fire safety equipment from Amsterdam to Kuala Lumpur for a fire security company. The shipment included 8 pallets containing Modulaser, a cutting-edge smoke detection device. Our team ensured every step of the import process was seamless, from handling customs procedures to transporting to our client in Johor.

FLOWN FROM ICN TO KUL FOR NEWLY SETUP POWER PLANT IN SELANGOR



We worked with our partner in South Korea to arrange the freight of a Ground Lightning Protection system from ICN to KUL. This cargo was imported for use in the Pulau Indah Power Plant, a project we had worked on for the past two years.

9 HEAVY PALLETS OF COOLING FANS FROM CHICAGO TO KUALA LUMPUR

We've been importing crucial components for power maintenance projects across Malaysia. Recently, we managed a shipment of cooling fan sets ordered from the USA, which were delivered via Chicago airport to Kuala Lumpur.

With a weight of almost 4 tons, the pallets were carefully handled and delivered to client's designated sites.



SEA FREIGHT & WAREHOUSING



EXPORTING PRODUCTION LINES FROM MALAYSIA TO AFRICA

We are assisting a client to export their factory's production lines to Africa. As part of this process, we're overseeing the transfer of 457 packages to our warehouse for temporary storage before shipment. Due to the plant's scheduled closure, we're ensuring a smooth transition by managing the logistics and handling of all items. These production lines will be shipped in batches to Ivory Coast, Africa. We anticipate loading all items into 30 or more containers, including special equipment for out-of-gauge (OOG) cargoes. Stay tuned for updates on our progress in our next newsletter! We'll keep you informed every step of the way as we work towards this exciting venture.



HANDLING & STORAGE OF POWER DISTRIBUTION SYSTEMS

We're excited to share that more than 100 containers have arrived at our warehouse for temporary transit before delivery to our client's site in Klang Valley. These containers hold intelligent power distribution units designed to ensure a consistent power supply to plants, buildings, or premises.

IMPORT OF OOG COOLING EQUIPMENT FOR A CHEMICAL PLANT

Items such as air filters, silencers, water pumps, and cooling towers are what constitute a cooling system. These were imported to be used in a chemical plant in Selangor. We collaborated with our partner in China to ship these out-of-gauge (OOG) cargoes to Port Klang.





IMPORT OF ESCALATOR & ELEVATORS FOR NEW BUILDINGS

We have a strong track record of handling logistics for our clients supplying escalators and elevators in Malaysia. Recently, we have handled goods that will be distributed within Klang Valley for the setup of new office buildings. More construction projects are in the pipeline and we hope to see an increase in volume in the upcoming months!

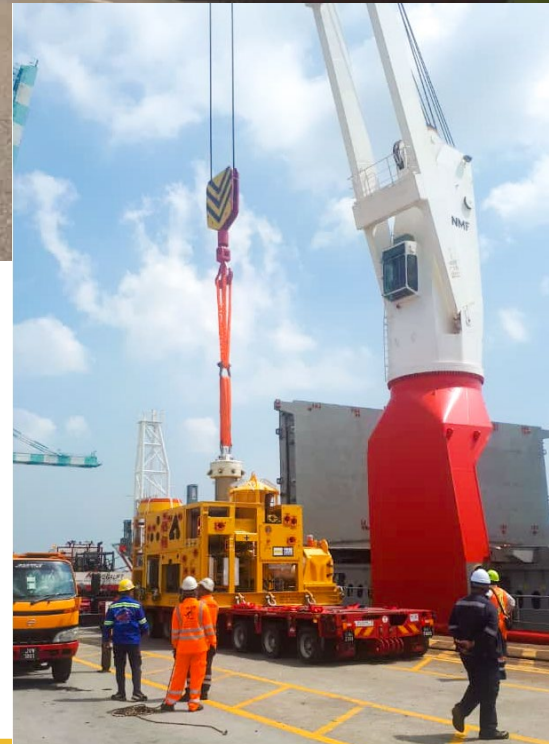
Ramadan & Hari Raya Celebrations



Export of Spool Tree (X'mas Tree)

PROJECT

Cargo: Spool Tree (X'mas Tree)
Dimension: L5.51 m x W4.77 m x H4.93 m
Weight: 74 ton



Covering nearly 400 km, we successfully transported 2 units of Spool Tree from Port Klang to Tanjung Pelepas port for export. These cargoes are bound for Turkey, en route to their final destination in Azerbaijan. Alongside the main shipments, we also handled crates of accessories onboard the vessel. Kudos to our team for their excellent coordination, making this operation a success!

Export of Flash Hopper to Singapore via Barge

PROJECT

Cargo: Flash Hopper
Dimension: L14.28 m x W8.24 m x H8.45 m
Weight: 95 ton

