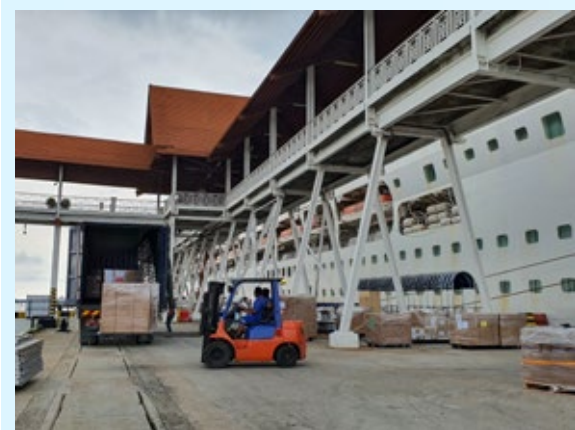




RETURN OF HIGH VALUE CRUISE ITEMS FROM PORT KLANG TO USA



We were contacted by our partner to assist on handling an unusual shipment of returning batches of high value items discharged from two cruise ships in Port Klang. The cruise ships have been sold to new owners and items such as exquisite paintings, art pieces and general ornaments had to be returned to Miami and New York.

Multi-Trans was tasked to receive the cargoes at the cruise jetty in Port Klang and transport them to a temporary storage facility within the Free Trade Zone area. We are currently arranging the ocean freight and will load the items into containers to be shipped out to USA.

REGULAR IMPORT OF BITUMEN FROM DUBAI TO MALAYSIA



We have a newly secured client that has repeated shipments of 10-20 containers of bitumen from Dubai. Due to the distance of the final destination, all the containers are sent to our warehouse for the goods to be transferred to open trucks prior to delivery. By doing this, empty containers can be returned quickly and we can spread out the schedule for client to gradually receive the cargoes.

400 CARTONS OF BITCOIN MINERS EXPORTED FROM KUALA LUMPUR TO KAZAKHSTAN



We recently arranged a large air freight shipment of supercomputing hardware which were Bitcoin miners from Kuala Lumpur to Kazakhstan. There were 400 cartons packed in pallets amounting to a total weight of 7 tonnes. The client is an international trading company that supplies computing hardwares meant for cryptocurrencies and artificial intelligence.



SCADA SYSTEM FOR 30MW SOLAR PLANT IN PAHANG

The supervisory control and data acquisition (SCADA) system is usually one of the few final items delivered to a solar plant site when it's nearing its commissioning. We had completed all of the earlier deliveries back in April for the solar modules and mounting structures. It's great to see another solar project coming to fruition and we're glad to always have our client's trust.

GAS TURBINE SPARE PARTS FOR POWER PLANT

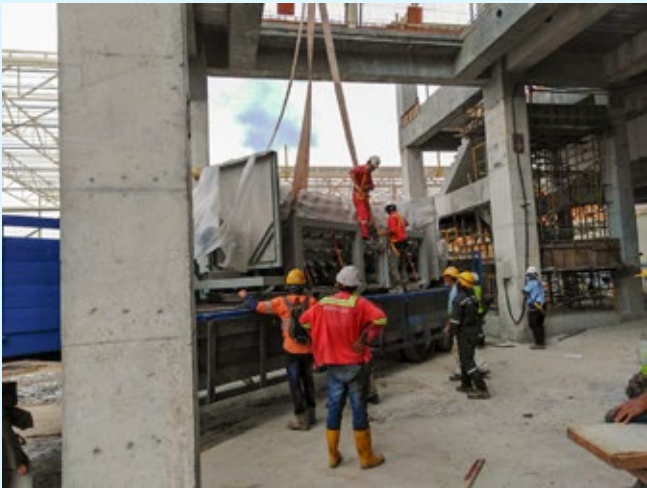


As a power plant continues to operate, there will always be new items to be purchased whether to upgrade or replace broken parts. We just delivered a spare part for the gas turbine imported from Japan to Port Dickson for one of the largest power plants in Malaysia.

ENGINE STAND FROM MIAMI, USA



We helped to air freight an engine stand weighing 5 tonnes from Miami, USA to Kuala Lumpur for leasing purposes. The stand is specially meant to support aircraft engines.



WEEKLY DELIVERIES TO NEW PAPER FACTORY IN KUALA LANGAT

We're happy to know that our client's expansion of their manufacturing plant is progressing well. It has been almost a year since we embarked on the journey as their project forwarder.

There had been delays in construction due to the Covid-19 pandemic and the earlier movement control order in Malaysia. We are now gradually delivering the cargoes that have been temporarily stored in our warehouses. Also, we have been engaged to transport other machineries such as lifting beams, spare parts, sections of cranes, etc. from the fabricator's yard to the site. We foresee the regular deliveries to go on for a couple more months until the project is completed.



OLED SCREEN LAMINATOR FOR ELECTRONICS PLANT IN BANGI

It was an oversized cargo arriving in combination of Flat Racks and normal containers carrying the largest laminator system and some of its accessories. Our job was to receive them in Port Klang, transport to the site, unload and unpack the items from their individual packing. Then we move the cargoes in to the manufacturing plant. We worked hand-in-hand with our associate, Megalift who is highly familiar with such a scope of work.



This was a highly critical job to shift two units of 31-m tall Mechanical Unloaders in Lumut Port located along the Straits of Melaka, Malaysia. Not only did it require engineering expertise, we would not have successfully executed without a team of experienced personnel.

While the traveling distance was not very far, the coastal setting posed a considerably high risk with strong and unpredictable winds. Given the height of the cargo, it was also challenging adjusting its centre of gravity. From jacking up the cargo, moving along the trajectory and jacking it down at its final position, we had to take intervals of pauses to ensure cargo stability and gushes of winds to pass.

Cargo: Mechanical Unloader

Dimension: L12.00 m x W4.60 m x H31.00 m

Weight: 253 ton

Cargo: Pneumatic Bulk Crane

Dimension: L7.60 m x W4.60 m x H31.00 m

Weight: 135 ton

Transport of Transformers to 40MW Solar Plant in Kedah



We transported one unit of 45 MVA Power Transformer along with its accessories from Port Klang to Kuala Muda, Kedah for a 40MW solar plant.

Cargo: Power Transformer

Dimension: L7.17 m x W2.53 m x H3.59 m

Weight: 64 ton

